



DURALIE COAL PTY LTD

ABN 81 070 318 259

NEWSLETTER

DURALIE COAL MINE COMMUNITY CONSULTATIVE COMMITTEE

Background

Duralie Coal Pty Ltd (DCPL) will be seeking approval from the NSW Minister for Planning to allow the continued operation of the Duralie Coal Mine once reserves within the existing approved open cut mining area has been exhausted.

The following provides an overview of the future development plans for the Duralie Coal Mine and description of the environmental assessment process.

Future Development

An aim to maximise coal recovery coupled with the desire to extend the life of the existing operation has initiated DCPL's plans to develop the Gloucester Coal Project (GCP).

The main components of the GCP are an extension to the current mining of the Weisemantle Seam and development of the Clareval Seam to the north west of the existing Duralie operation – refer Figure 1

The proposed open cuts would result in the production of 20 million tonnes (Mt) of coal over a period of eight (8) years from 2010 until 2018.

Preliminary consultation with the Department of Planning (DoP) has indicated that approval for the GCP could be sought through an application for consent under Part 3A of the *Environmental Planning and Assessment Act, 1979* (EP&A Act).

PROPOSED SCHEDULE

2010–2018: Clareval, 2010–2018: Weisemantle Extension

Consultation and Assessment Process

It is currently planned that a Part 3A environmental assessment will be on public exhibition at the Great Lakes Council offices (and possibly other viewing locations as determined by DoP) for a period of at least two (2) weeks in early 2009.

DoP will place a public notice advertising the exhibition of the document in local newspapers inviting submissions for consideration.

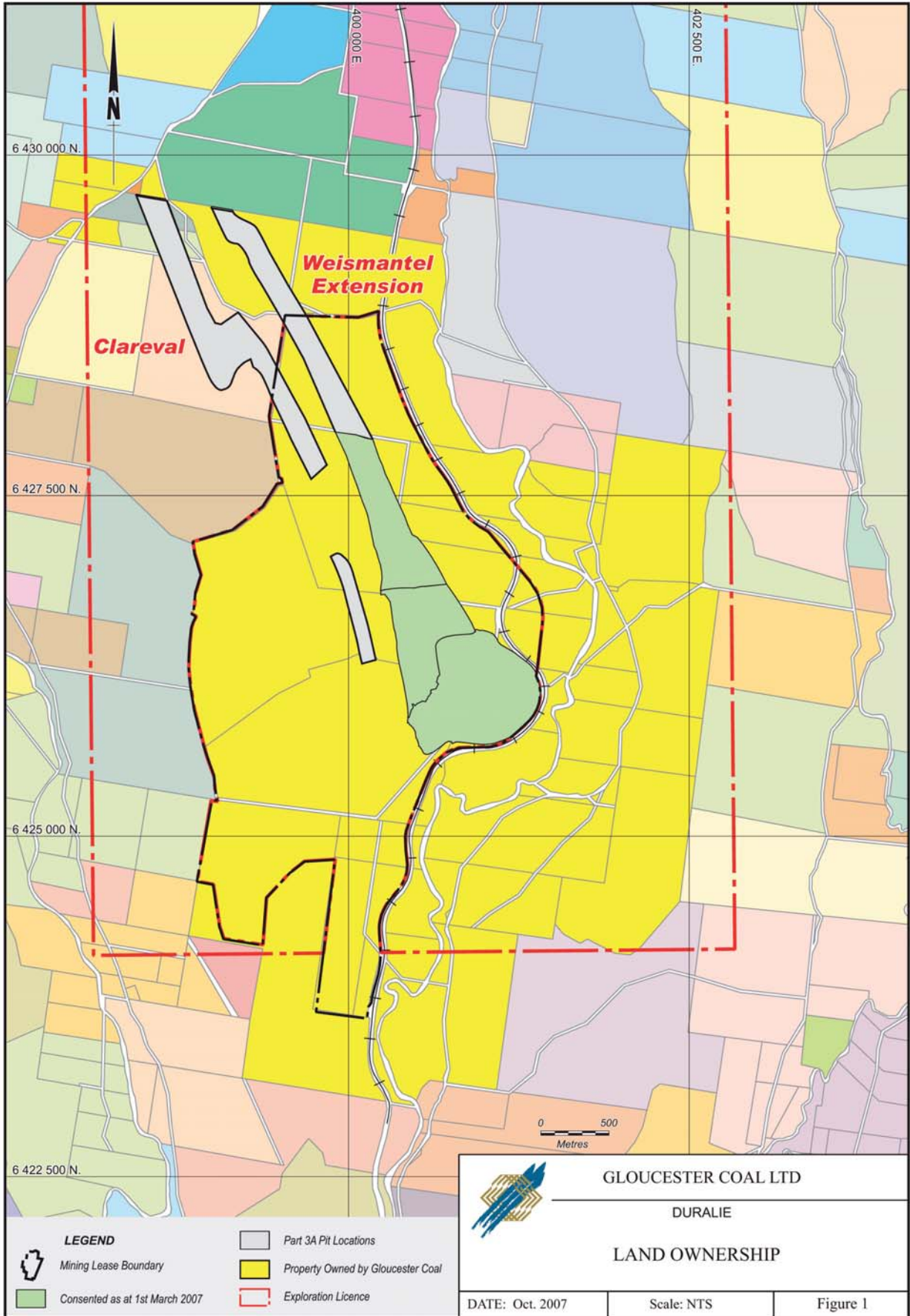
Following the public exhibition period, DoP will consider submissions from the public and regulatory authorities.



General Location of Proposed Mining
– Viewed to the North West

DURALIE COAL MINE
PO Box 168
Gloucester, NSW 2422

Enquiries
Phone: (02) 4994 5716



GCL - 0022 - C.C. Meeting - Duralie