



HALF YEAR SUMMARY

- **Mine production tonnages and costs in line with forecast**
- **Revenue up 6% as higher coal prices started to take effect at half year end**
- **Higher demurrage costs (\$1.4 Million) during Newcastle port congestion in first quarter of 2004**
- **Net Loss \$5.6 Million but profitable in June and expected to remain so throughout the second half**
- **Over the first half GCL continued to produce and deliver coal at an average cash cost in the mid A\$30s FOB**
- **GCL's financial orientation and outlook changed towards the end of the half when in June the Company recorded a healthy profit as the impact of higher contract coking coal prices took effect**



SALES – CONSISTENT AND STABLE

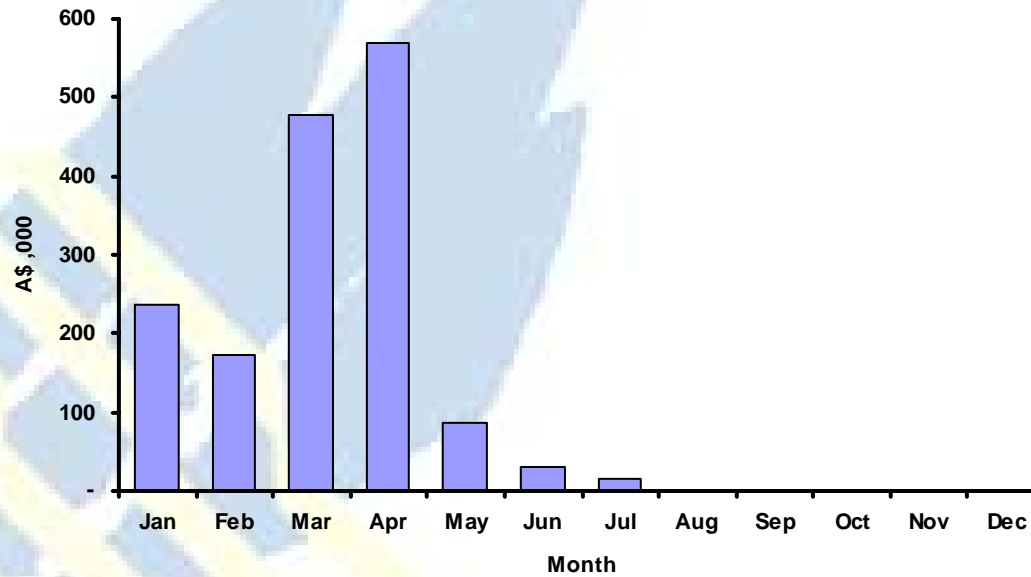
Coal Type	Q1 2004	Q2 2004	YTD 2004
Coking	230	175	405
Thermal – Export	106	208	314
Thermal - Domestic	119	66	185
Total Sales	455	449	904
Purchases	(65)	(28)	(93)
Net Sales	390	421	811

- ❑ 40% OF 2005 THERMAL PRODUCTION ON CONTRACT
- ❑ STRONG COKING DEMAND TO CONTINUE
- ❑ ONGOING DEMURRAGE COSTS NEGLIGIBLE WITH PORT MANAGEMENT OF ALLOCATION



DEMURRAGE - DIMINISHING

Stratford Joint Venture Demurrage - July 2004





MINING AND OPERATIONS - RELIABLE

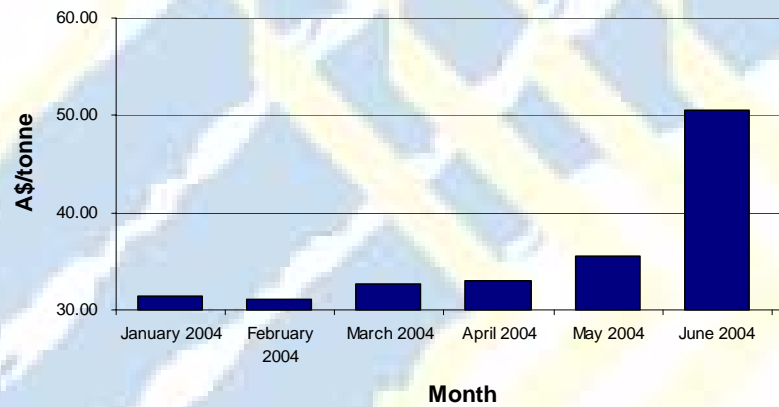
ROM Coal Source		Q1 2004	Q2 2004
		'000 t	'000 t
Duralie	Railed to Stratford CHPP	360	367
Bowens Road North	Trucked to Stratford ROM stockpile	165	122
Co-disposal recovery	Trucked to Stratford ROM stockpile	117	105
	Total ROM coal delivered to CHPP	642	594
Preparation Plant	ROM Coal processed	614	655
	Total Yield	74%	68%
	Total Product	454	448

- ❑ OPERATIONAL KEY PERFORMANCE INDICATORS ESTABLISHED
- ❑ SAFE AND EFFICIENT CONTRACT MINING OPERATION
- ❑ PREPARATION PLANT TRANSITION AND COST CONTROL MANAGED
- ❑ REGULAR RISK REVIEWS OF ENVIRONMENTAL FACTORS

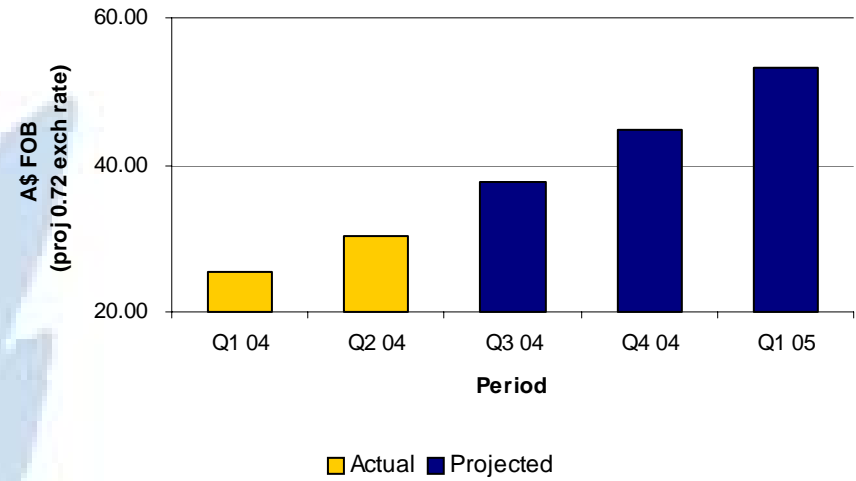


REVENUE - INCREASING

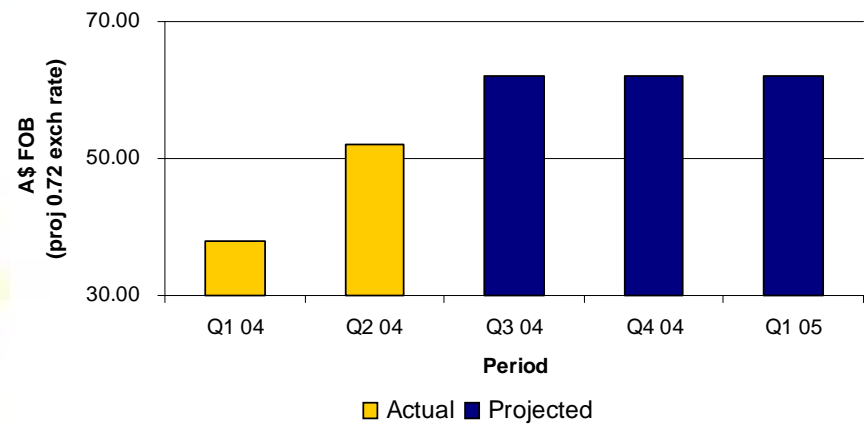
Average Monthly Revenue per tonne



Average Thermal Coal Price A\$/tonne



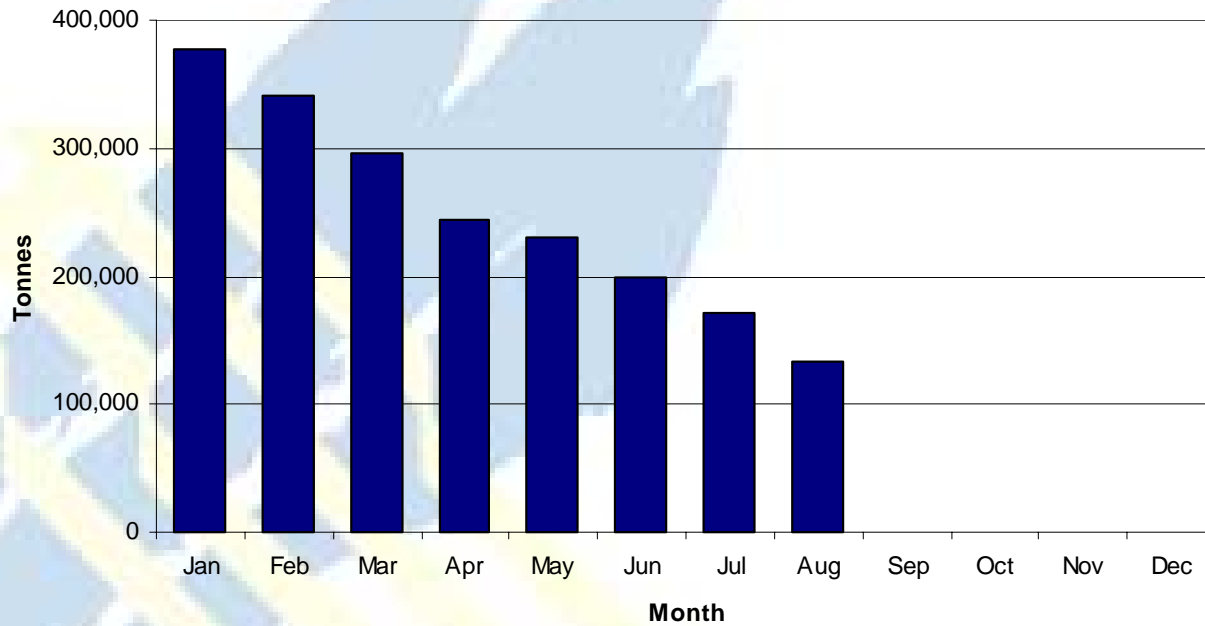
Average Coking Coal Price A\$/tonne





OUTSTANDING DOMESTIC TONNAGE - REDUCING

Domestic Contract Tonnage Outstanding

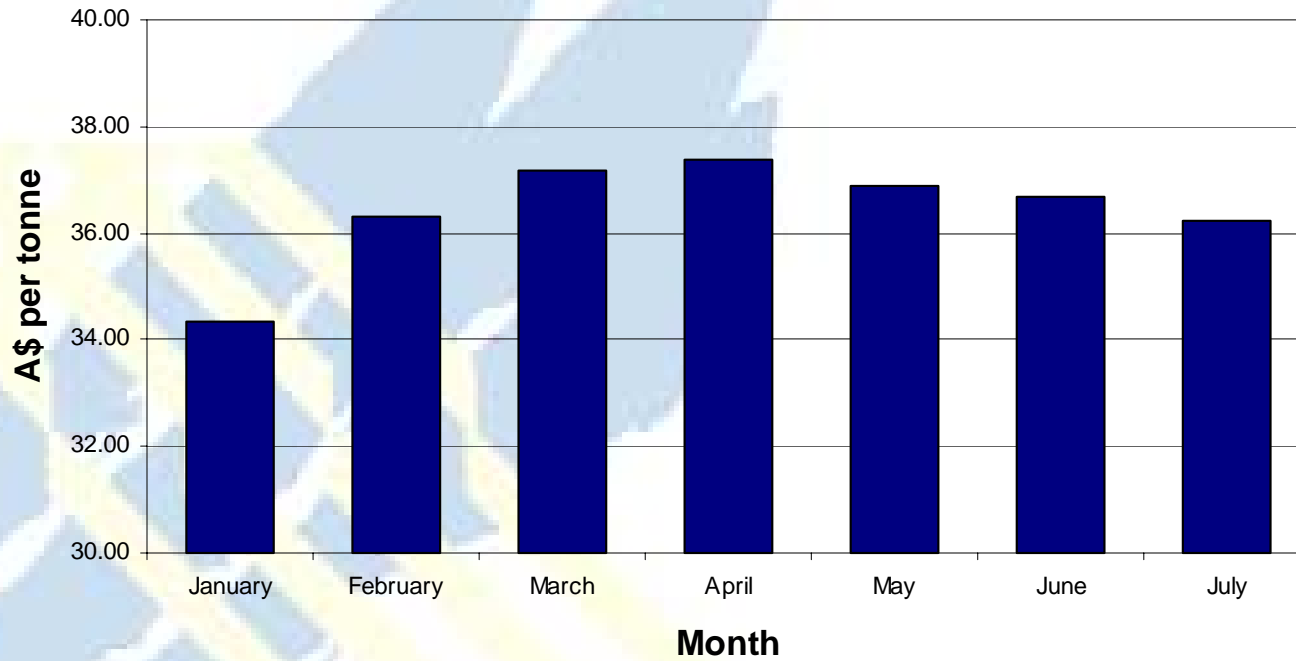




CASH COSTS – CONTINUING IN THE MID A\$30’S

(incl demurrage & royalty)

Monthly Cash Cost per tonne (Rolling Average)





CORPORATE

NEW BOARD

FINANCE FACILITY IN PLACE

ESTABLISHED EXPLORATION AND DEVELOPMENT TEAM FOR

DURALIE UNDERGROUND

PRUDENT FOREIGN EXCHANGE POLICY IN PLACE